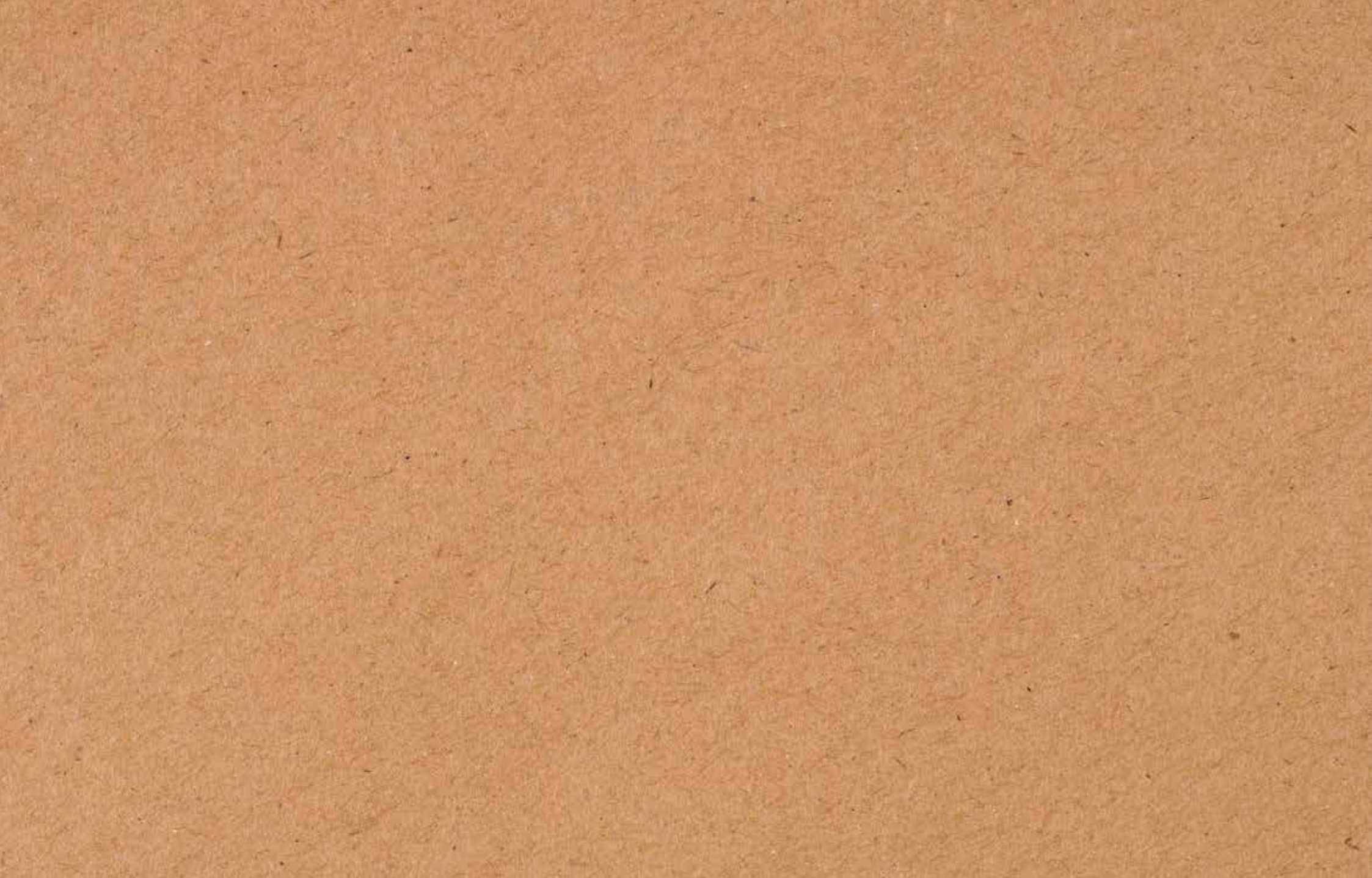


BLUEWATER PRO HOW TO USE GUIDE



BLUEWATER

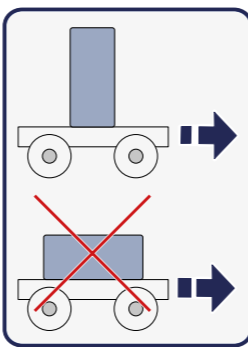


**BLUEWATER PRO
HOW TO USE GUIDE**



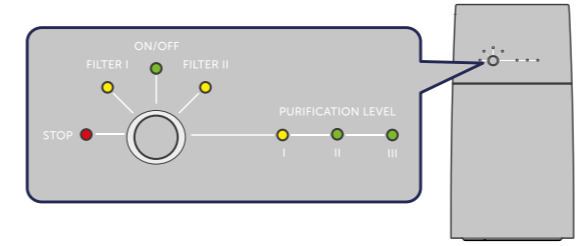
For products with serial number 220401001 and later.

You'll find everything you need to know regarding how to use your new Bluewater Pro purifier in this How to use Guide. Or scan the QR code for a user-friendly online version of the guide.

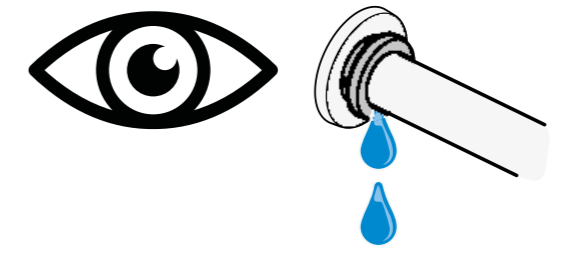


How to take care of your Bluewater Pro

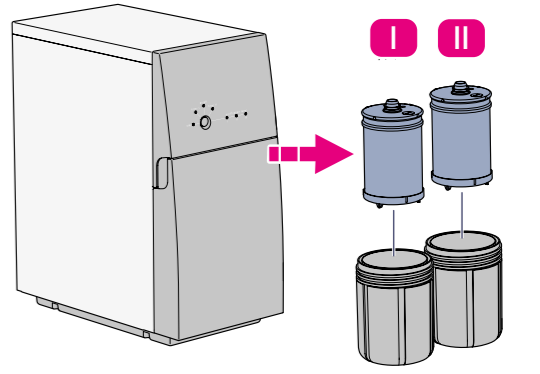
Check the indicator lights
- Regularly



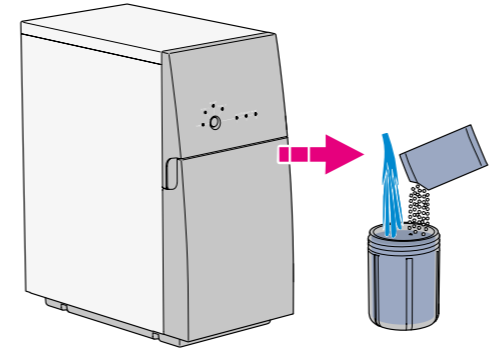
Check for leaks
- Regularly



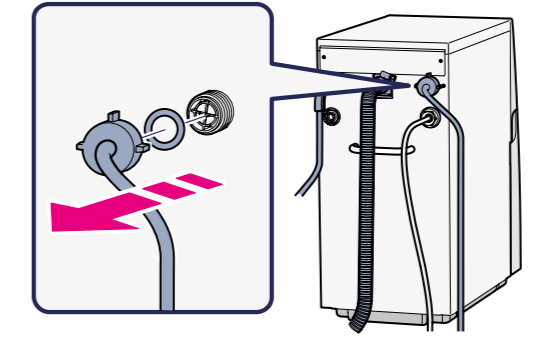
Change your prefilters
- Every 6th month or when the filter indicators are lit



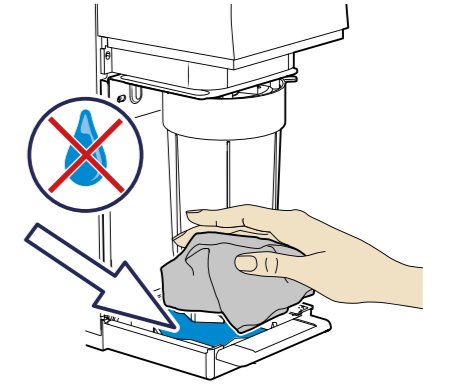
Descaling
- Every 4-6th month



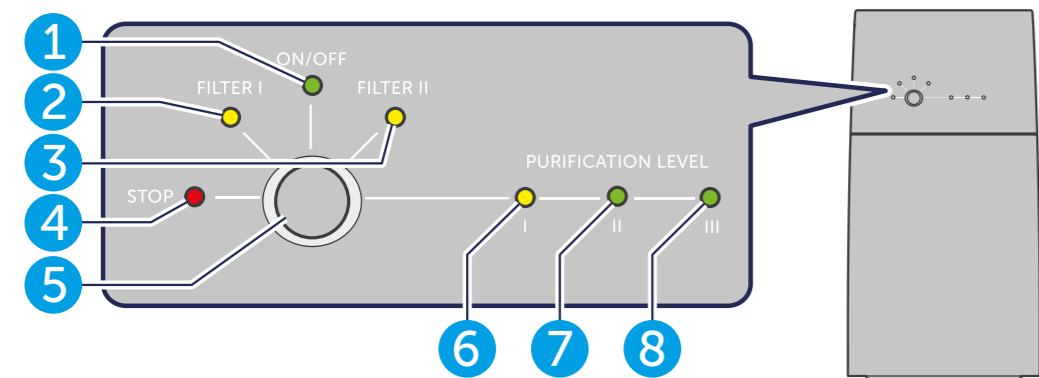
Clean the inlet grid filter
- Once a year



Wipe off condensation from base plate
- When necessary



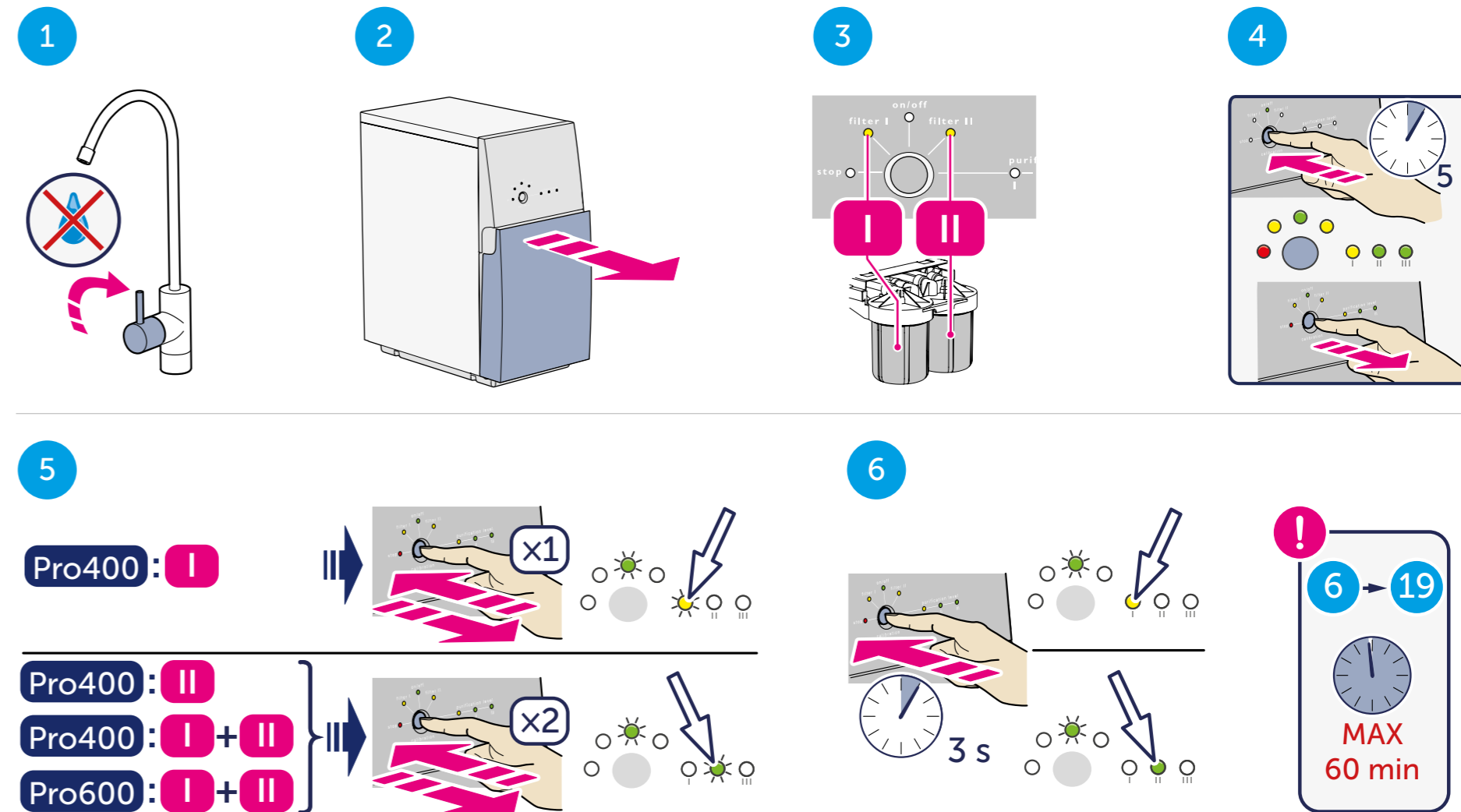
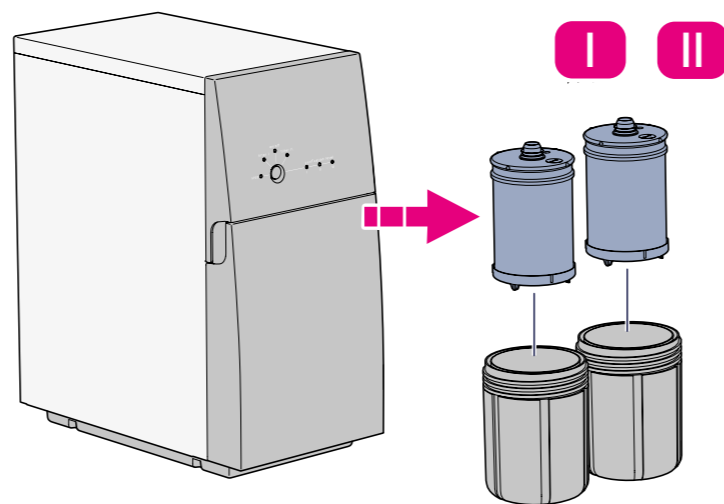
Check indicators lights



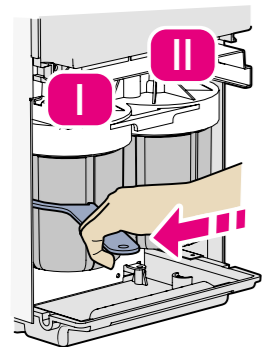
Pos	Light/Button	Description
1	ON/OFF	On: Off: Flashes:
2	FILTER I	On:
3	FILTER II	On:
4	STOP	Flashes/On:
5	Button	
6	PURIFICATION LEVEL I	On:
7	PURIFICATION LEVEL II	On:
8	PURIFICATION LEVEL III	On:

Change the prefilters

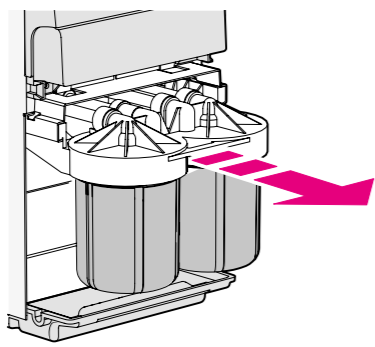
<https://www.bluewatergroup.com/where-to-buy/>
Pro 600: change both filters when filter light I or II lights up.



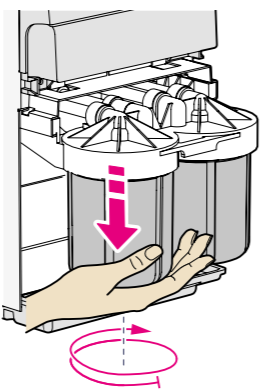
7



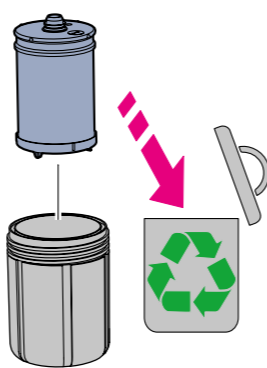
8



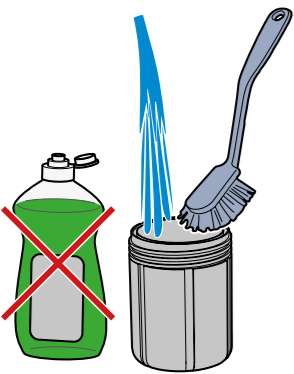
9



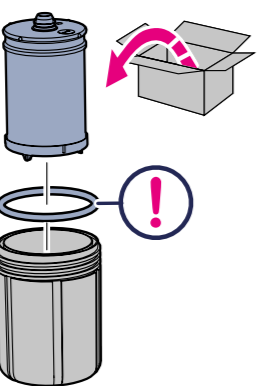
10



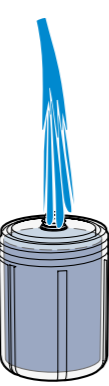
11



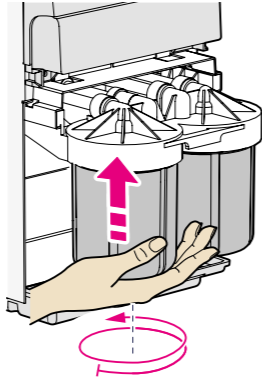
12



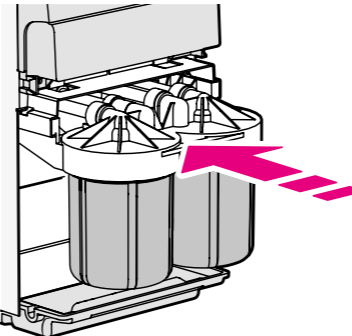
13



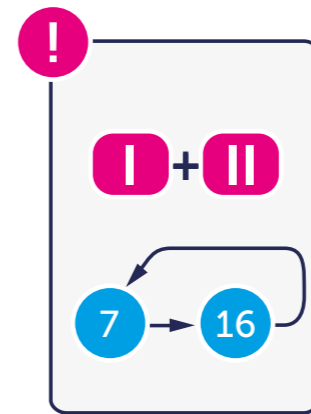
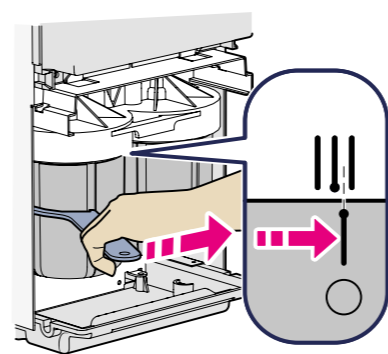
14



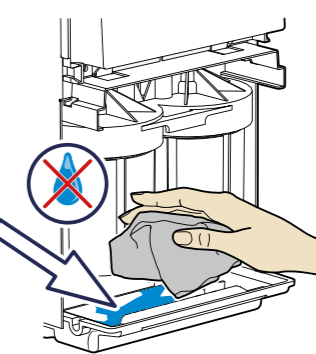
15



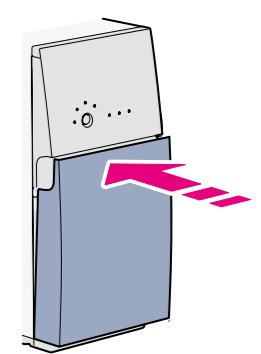
16



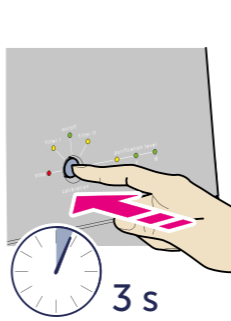
17



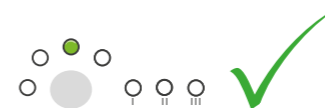
18



19



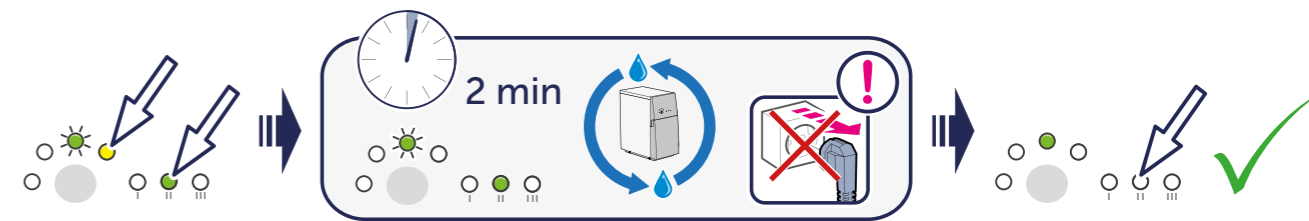
Pro400: I



Pro400: II

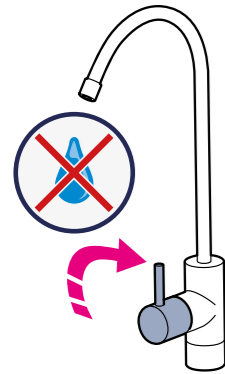
Pro400: I + II

Pro600: I + II

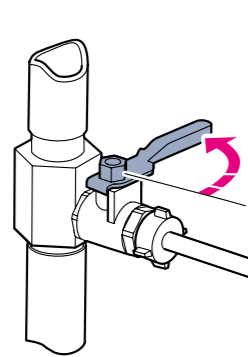


Descaling

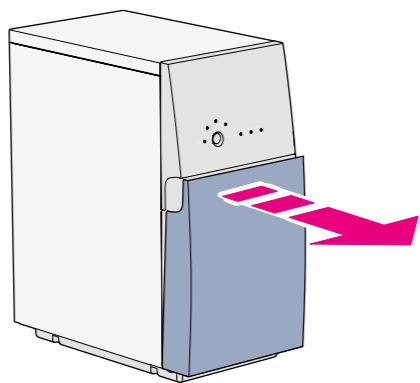
1



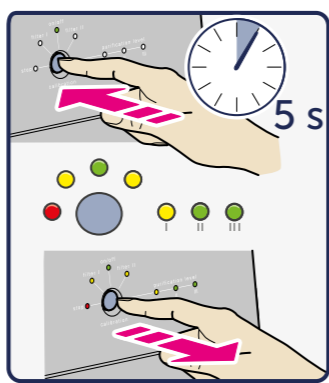
2



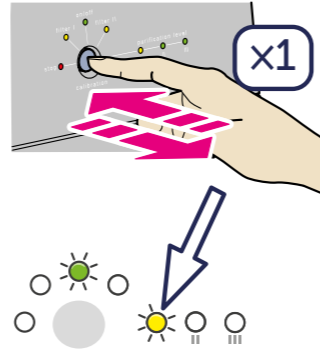
3



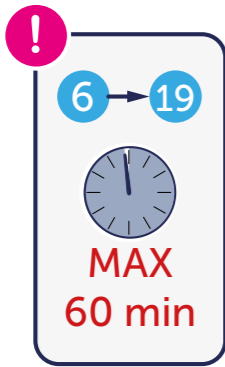
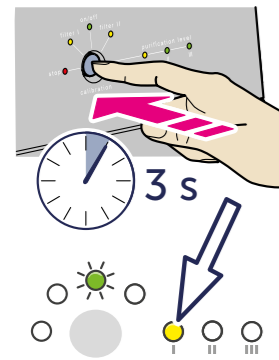
4



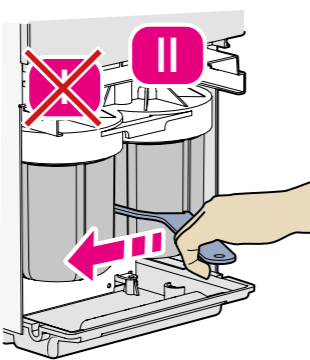
5



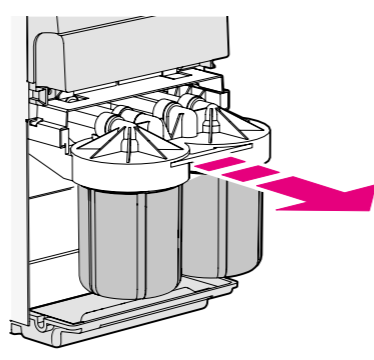
6



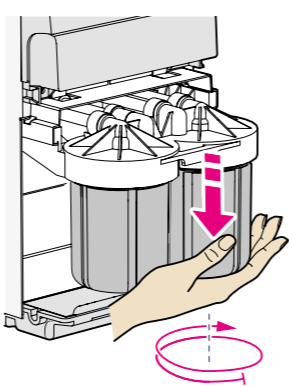
7



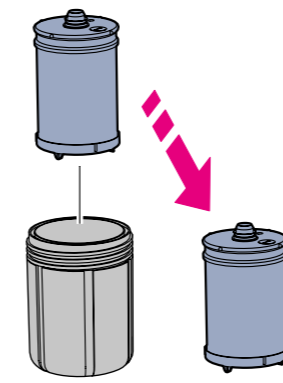
8



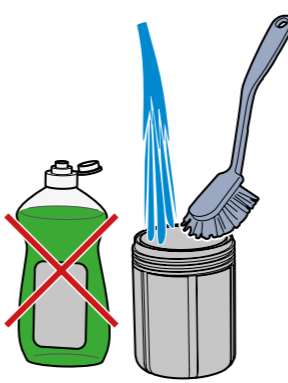
9



10



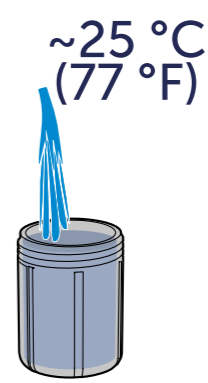
11



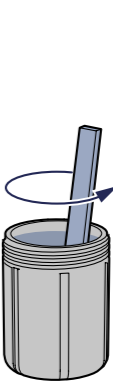
12



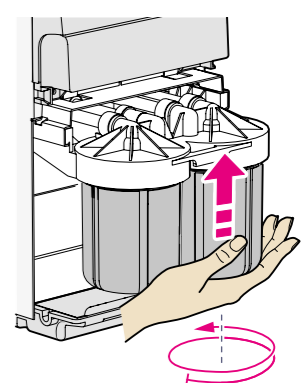
13



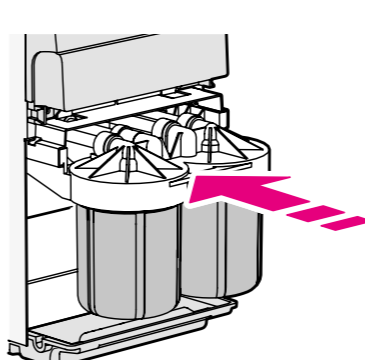
14



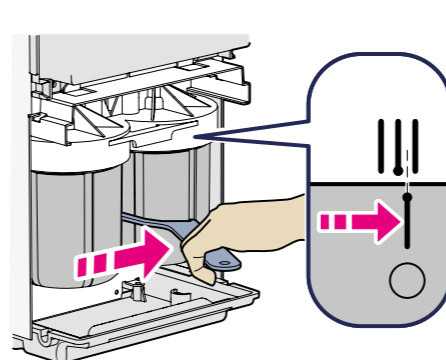
15



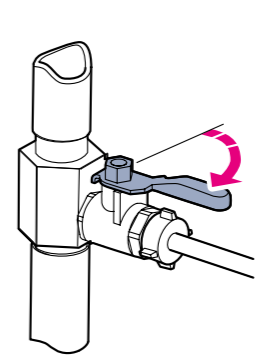
16



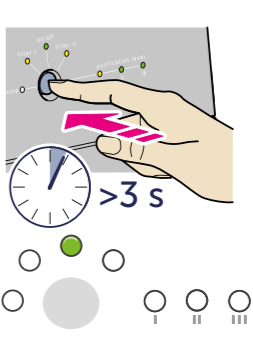
17



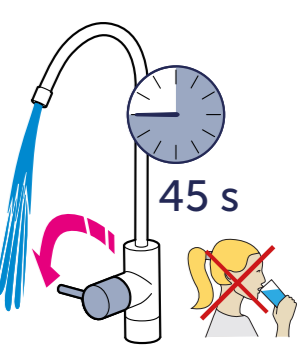
18



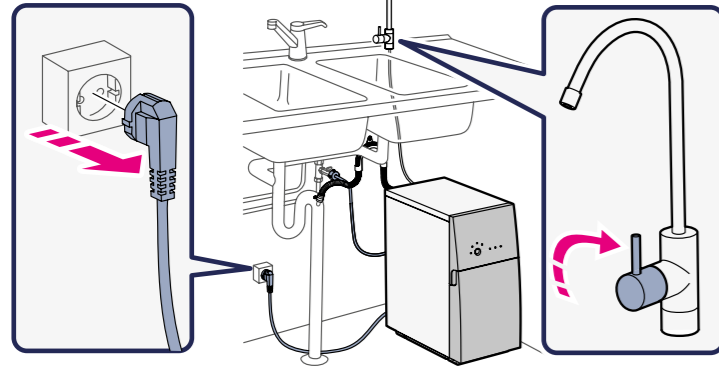
19



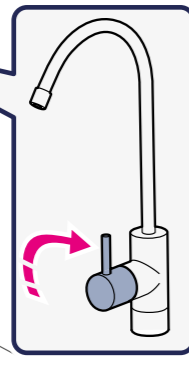
20



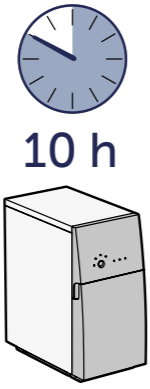
21



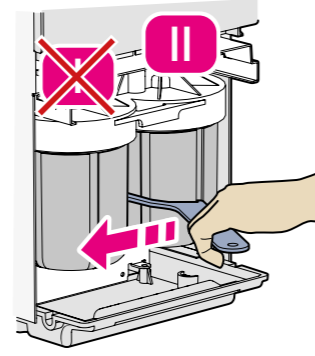
22



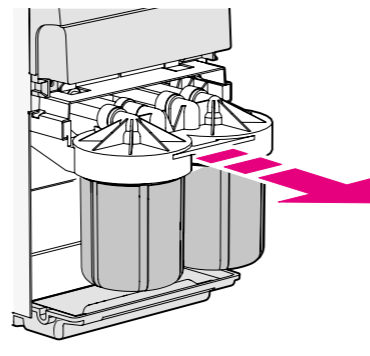
23



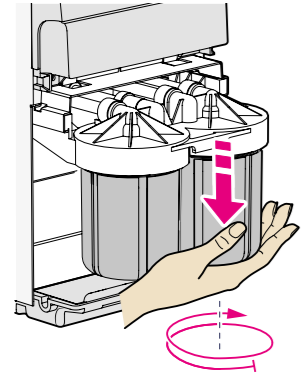
24



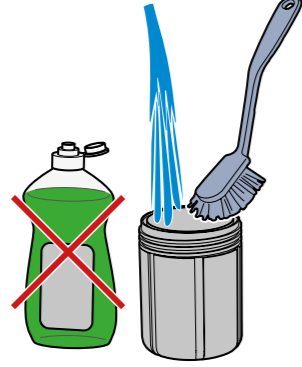
25



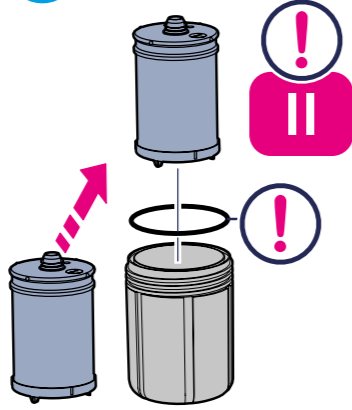
26



27



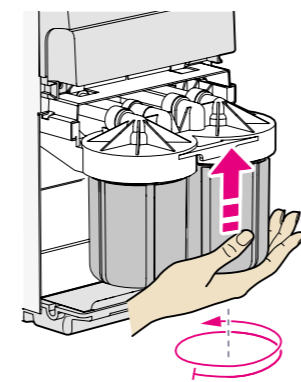
28



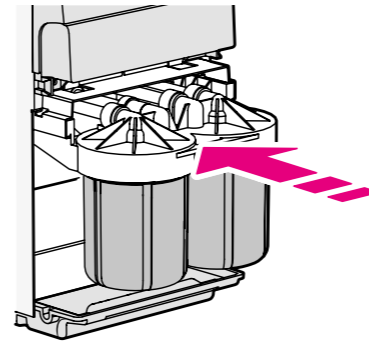
29



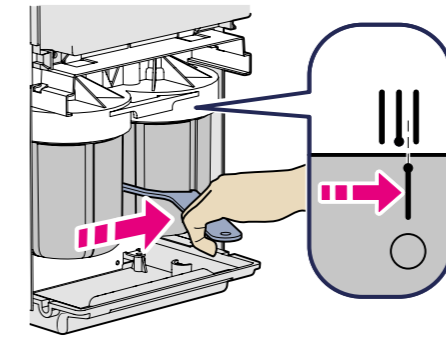
30



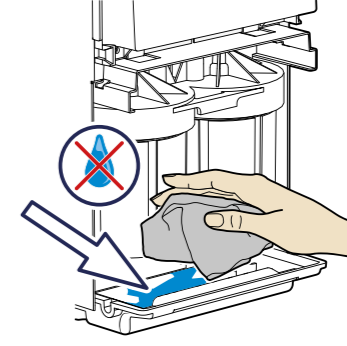
31



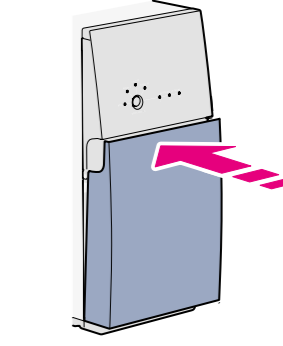
32



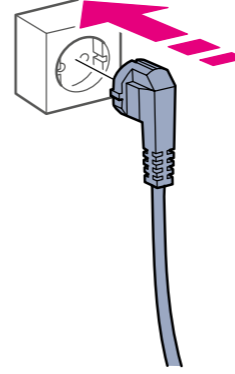
33



34



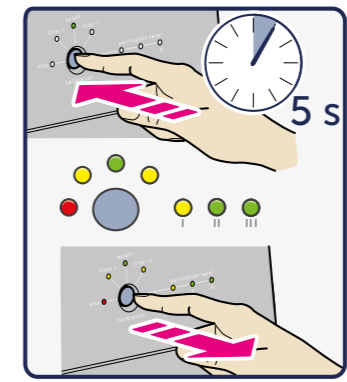
35



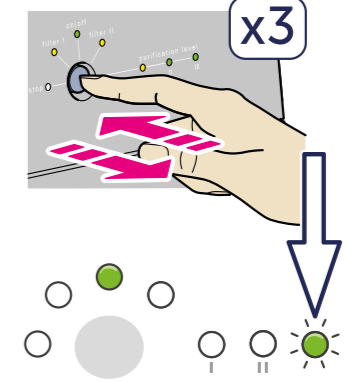
36



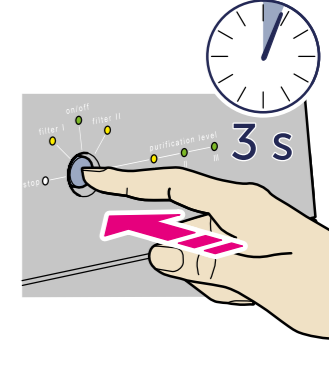
37



38



39



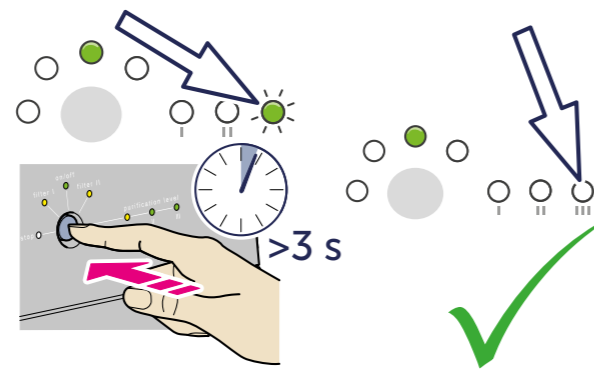
40



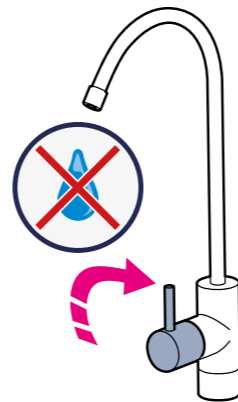
41



42

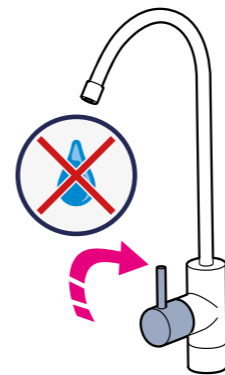


43

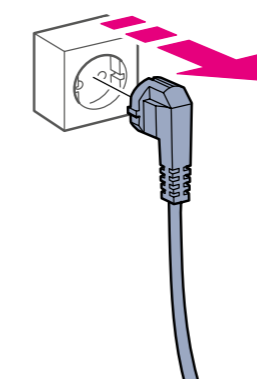


Clean the grid filter

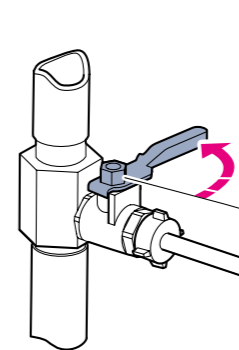
1



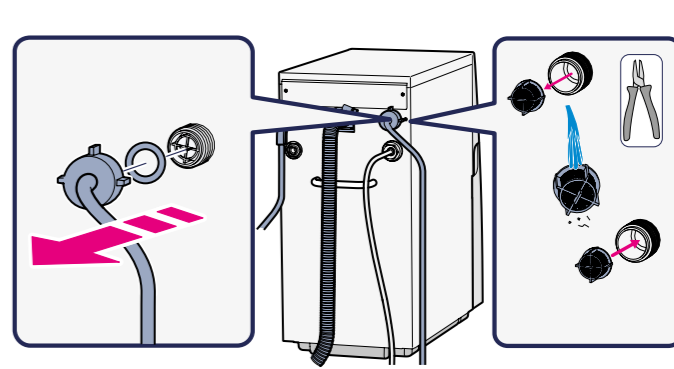
2



3

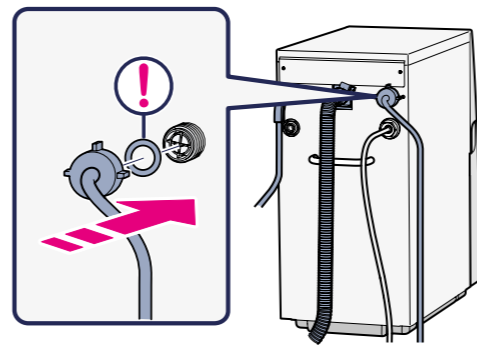


4

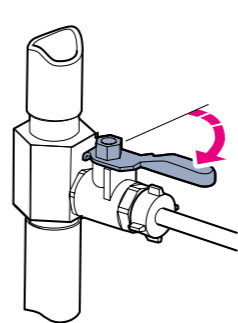


5

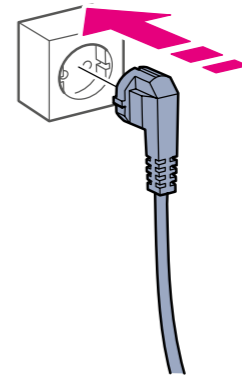
6



8



9



10



**FOR YOU &
OUR PLANET**



Document No 822901803 Revision 2205 © Bluewater Group 2020

ENG: The installation must comply with applicable local plumbing codes and regulations.

FR: L'installation doit respecter les normes et réglementations de plomberie locales applicables

ES: La instalación de fontanería debe cumplir con la reglamentación y las normativas locales.

PT: A instalação deve cumprir as normas e os regulamentos de canalização locais aplicáveis.

IT: L'installazione deve rispettare i codici e le regolamentazioni idrauliche locali vigenti.

DE: Die Installation muss die örtlichen Vorschriften und Richtlinien für Wasser bzw. Sanitäreanlagen erfüllen.

PL: Muszą być spełnione obowiązujące przepisy i regulacje dotyczące instalacji wodociągowej.

RU: Установка должна соответствовать действующим местным санитарным нормам и правилам.

SE: Installationen måste uppfylla gällande VVS-regler och -förfordningar.

FI: Asennus on tehtävä sovellettavien paikallisten LVI-sääntöjen ja -määräysten mukaisesti.

NO: Installasjonen må utføres i henhold til gjeldende praksis og bestemmelser for rørleggerarbeid.

DK: Installationen skal overholde de gældende lokale regler og forskrifter for VVS-installationer.

ZH: 必须按照适用的当地管道标准和法规进行安装。

AR: اہب لومعالم لقي حلحمة لكابسل اريي اعومو نين اوق مع بي لرتل قفاوتي نا بجي بي برع

BLUEWATER IS A SWEDISH WATER
COMPANY THAT PURIFIES LOCAL
SOURCES OF WATER INTO PURER,
FRESH DRINKING WATER.
WE'RE COMMITTED TO REDUCING
PLASTICS IN OUR OCEANS BY
ELIMINATING THE NEED FOR
SINGLE-USE PACKAGING. JOIN US.

BLUEWATERGROUP.COM

BLUEWATER
Danderydsgatan 11
114 26 Stockholm
Sweden

info@bluewatergroup.com



BLUEWATER